

All systems go

Africa

Systems Strengthening in Fragile Contexts: Lessons learned through Practice

Chair:

Bethlehem Mengistu,
Agenda for Change, Global
Coordinator

Presenters:

- Kyla Gregoire, CARE USA /Malawi
- Richard Bassono, GRET, Burkina Faso
- Lavuun Verstraete, Unicef Ethiopia
- Fatim Hélène Traoré, President of the Association for young water and sanitation professionals, Mali

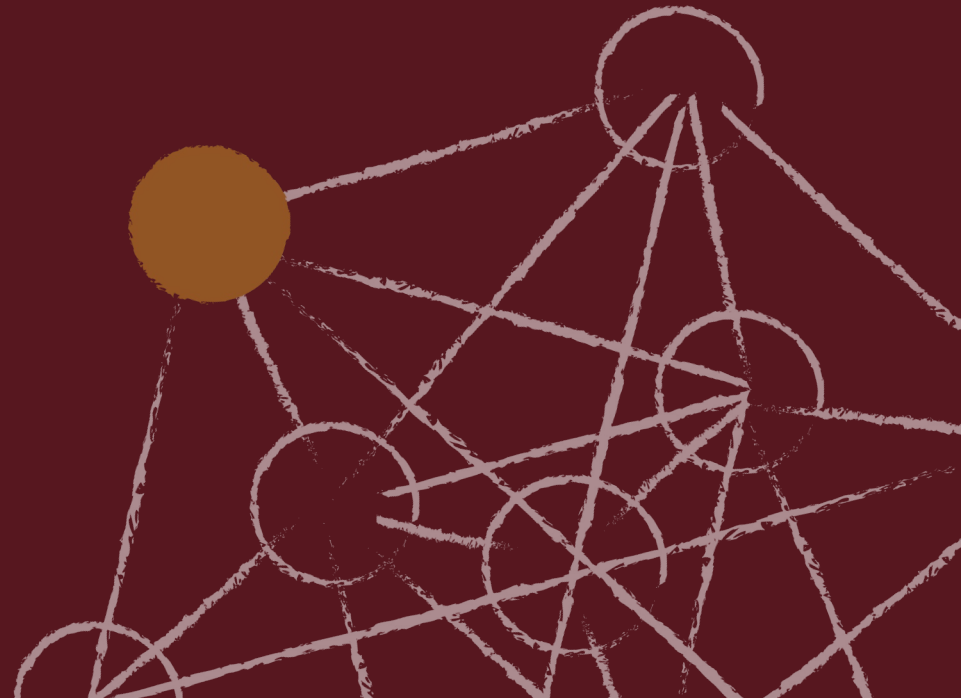
All Systems Go Africa

19-21 octobre 2022



Traduction / Translation

Kyla Gregoire - <https://bit.ly/3Tzq3xm> (FR)



All systems go
Africa

Rural Water Systems Strengthening in Marginalized and Shaded Districts of Malawi A Southern Malawi Case Study

Presented at: IRC 'All Systems Go Africa', 19-21 Oct 2022

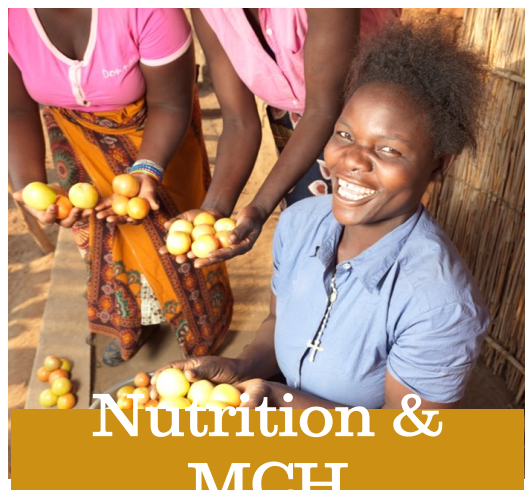
Presented by: Boyce Nyirenda, WASH Programme Manager, WaterAid, Titukulane Project
Kyla Gregoire, CARE USA Water+ Advisor



Titukulane: a *Resilience Food Security Activity* in Southern Malawi



Food Security & Poverty at the Center



Nutrition & MCH



Agricultural Livelihoods



VSLAs



Gender and Youth Empowerment



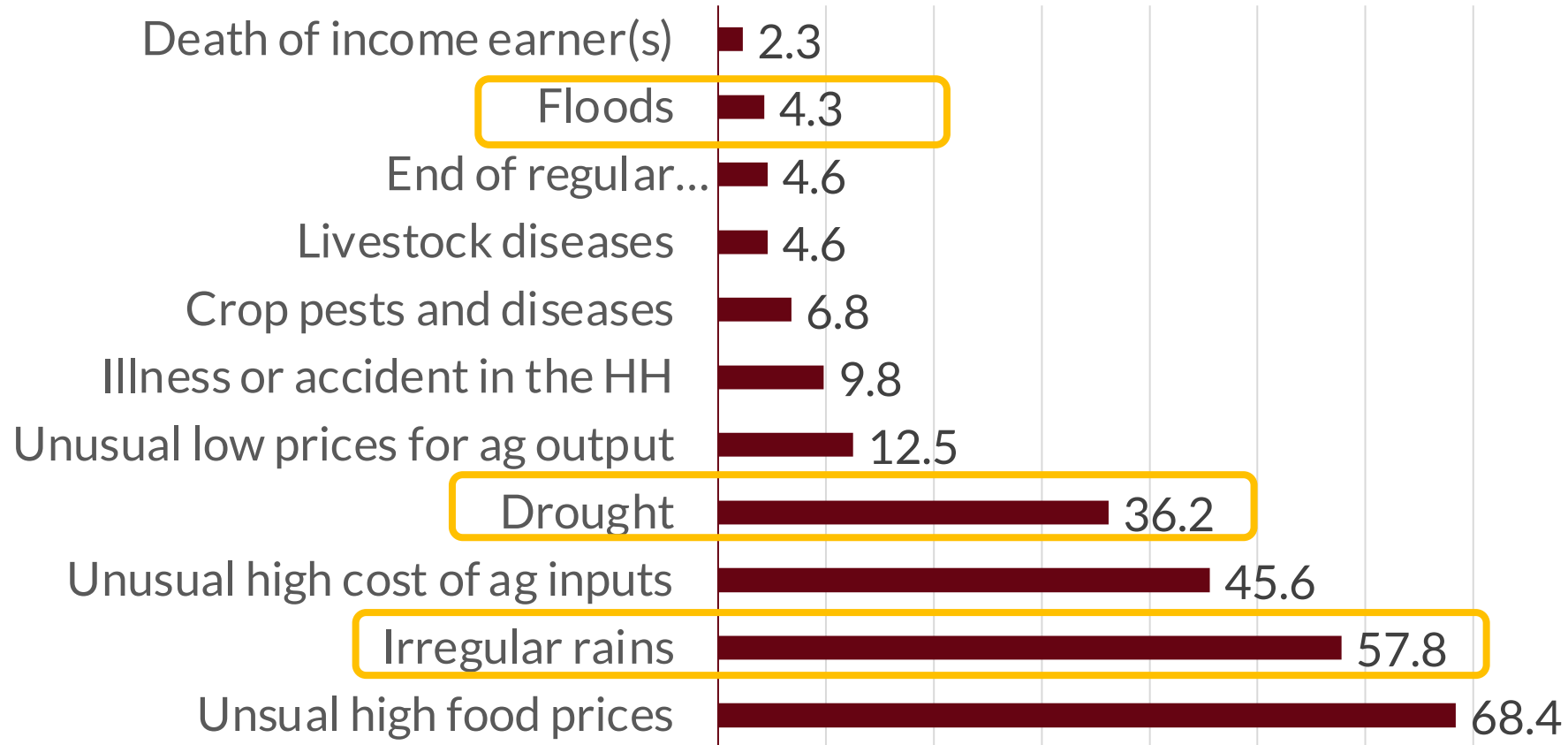
WASH



Water Security often Reigns in RFS Contexts

Droughts and Floods are often

HHs affected in last 12 months, 2016/17)



RURAL WATER GOVERNANCE IN

RF Where are we and where are we trying to



Most RFSAs

Box 4: Professionalisation of water service

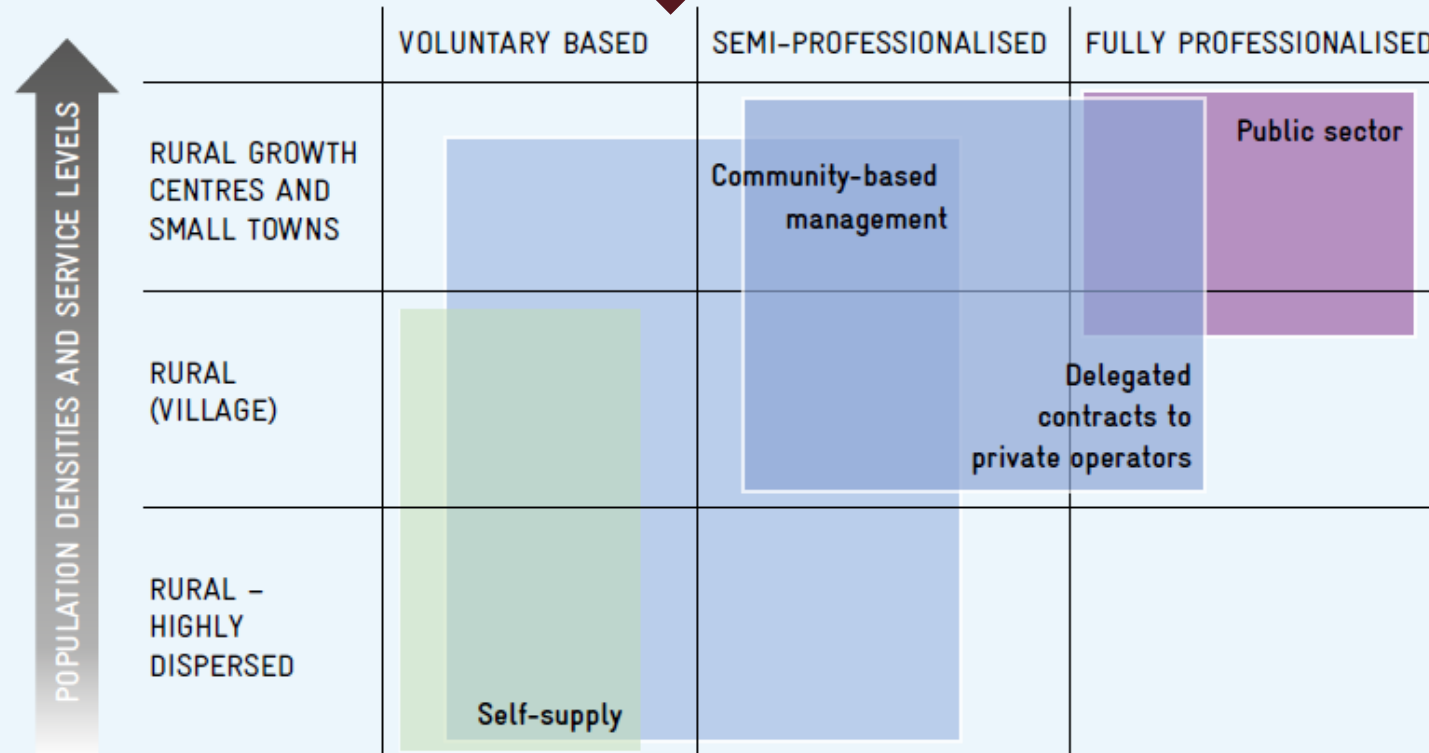


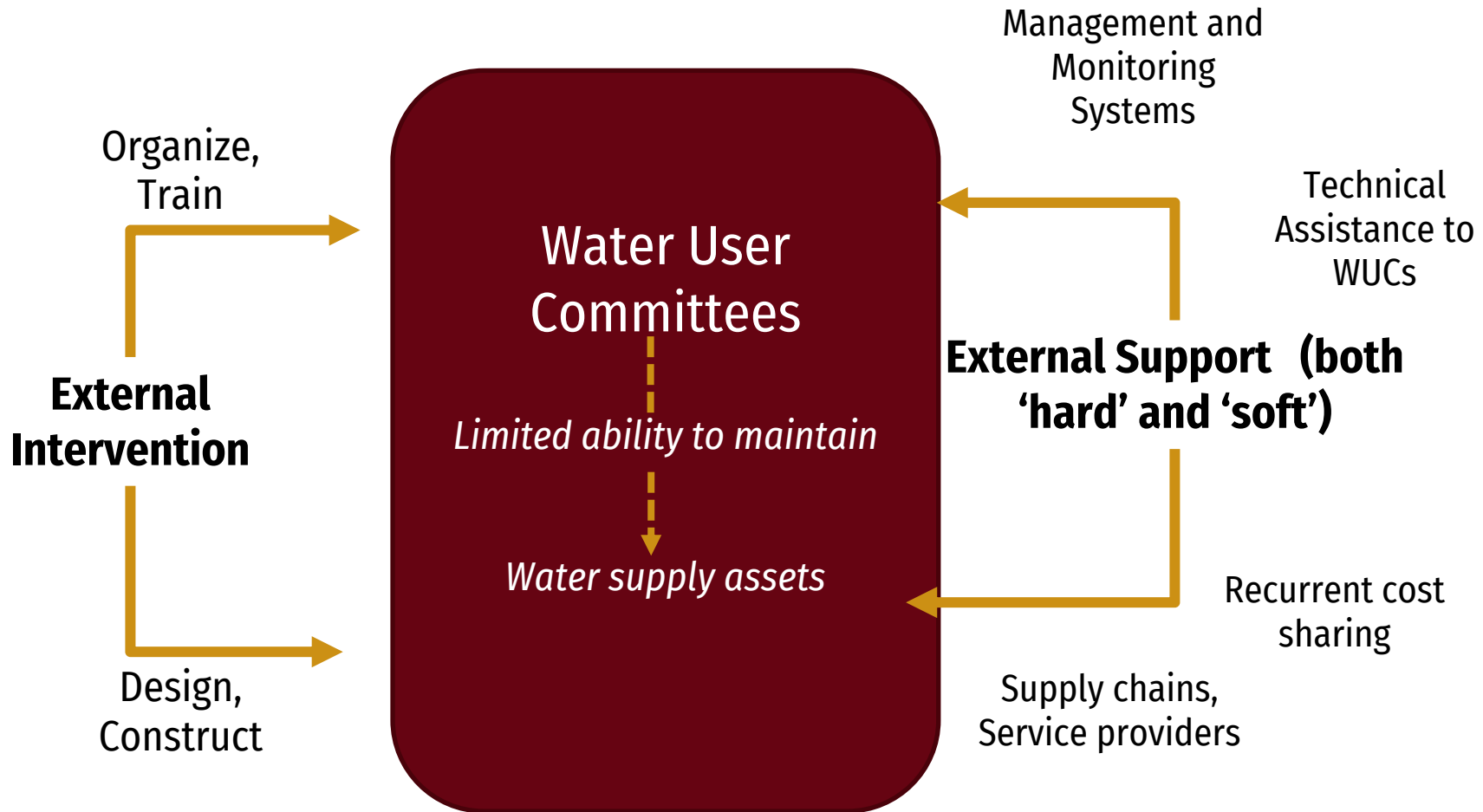
Figure 3: Types of 'rural' settlement and typical modes of service delivery

(Source: Lockwood and Smits, 2011)



A RURAL WATER GOAL FOR RFSAS:

Supported Community-Based



Titukulane seeks to improve women's, men's, girls' and boys' use safe water and sanitation at home through:

Concerted Systems and Governance Learning:

'Refine & Implement' Year focused on concurrent systems and infrastructure needs assessments

Community-to-District level Systems Strengthening

- Strengthening District and Community capacity to plan, budget, maintain, operate and sustain water infrastructure and service delivery.
- Operationalize DWDO/DHO National Governance Standards (O&M capacity strengthening; service reliability;

Infrastructure Investments

- Design and construction works of reticulated systems
- Construction QA/QC and contract management; Water Safety planning

An initial learning year that focused on developing a systems approach to



rural water:

Non-functionality of boreholes immediate linked to: poor siting (including groundwater yields); poor construction quality; poor water quality (fluoride, E.coli)

- Additional **feasibility parameters integrated into standard contracting procedures** and docs (e.g. yields, WQ, GW depth)
- Development and dissemination of **construction standards and Accountability Framework** to contractors and GoM to enforce standards.
- Expand scope for **reticulated DW investments** in high yield zones
- **Ministry-level engagement on water point construction** and water quality standards

Water Point Committees (i.e. CBM model) is primary management model, with limited efficacy: (i) **community mistrust, low transparency**; (ii) **high stress/attrition**; (iii) **non-compliance and overlap with service agreements and private mechanics**; (iv) **fragmented relationship with local government**; (v) poverty, seasonal incomes -> **low tariff rates**; (vi) **dependency beliefs**; (vii)

- Prioritized **official review of CBM model and policies**—tariffs, term limits, training structures and curriculum, incentive structures, mobile money, role definitions.
- Influenced **National call for CBM review**
- **MoWatSan leading review process**
- Borehole banking (through VSLA) to incentive tariff payments.
- ProWASH Life Cycle Costing approach

What actors & factors contributed to creating systems-focused learning in year 1?



What often doesn't work?	What TTK did to be more effective?
WASH leads without systems strengthening capacity or focus and/or lack STTA to support this.	A RFSA WASH team with strong governance and systems <u>capacity</u> (bolstered by HQ STTA with this focus)
Under-resourced assessments. Assessments repeating what's already known or available in literature.	An appropriately <u>resourced</u> ToR that was grounded in systems- and governance-focused questions and methods.
Consultants without sufficient and relevant capacity to conduct meaningful FR.	A consultant with background and <u>capacity</u> to execute the ToR
'Outsourcing' the learning to a consultant.	RFSA team ensures consultant oversight, support, and co-learning (i.e. <u>motivation</u>).

Titukulane Intermediate Results so far:

Facilitated participatory development of the Accountability Framework (AF) & informed with the Year 1 WASH Learnings

- ✓ AF redefines accountabilities of MoW&S, District Councils, and National Construction Industry Council of Malawi (NCIC), NGOs, and others.

Influenced review of Malawi's CBM model and sparked a national conversation on professionalization of management

- ✓ MoW&S commissioning assessment of **professionalization of management arrangements** with support from A4C.

Developed a TTK Water Governance strategy, aligned with the GoM National Water policy (2005), and A4C WASH Systems Building Blocks.

- ✓ Clearly defined approaches & building blocks within the goals, scope, and manageable interests of Titukulane.

Influenced WatSan Directorate to institutionalize district-level WASH Master plan

- ✓ Will help to scale to all 28 Districts by the end of 2023.

What else has been critical to success?

Titukulane builds on existing systems, policy, and people.

Ministry of Forestry & Natural Resources / Dept of Water Supply & Sanitation, Dept of Water Resources (WQ, WRM); POCs: Director for Water Supply; delegates for MoFinance

Southern Region Water Board

Regional

District

District Executive Committees

District Water Office

District Health office

Community

Water management committee (WMC)

Village Development Committees (VDCs)

Area Mechanics Network

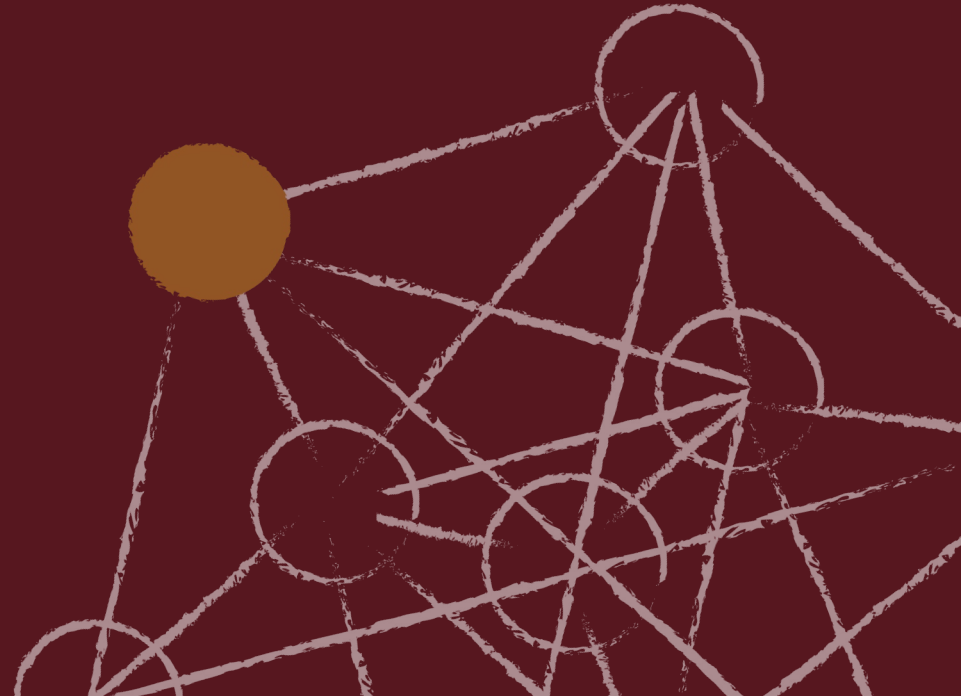


Thank you!



Traduction / Translation

Richard Bassono - <https://bit.ly/3TAMeD1> (EN)





USAID
DU PEUPLE AMÉRICAIN



AFD
AGENCE FRANÇAISE
DE DÉVELOPPEMENT



SOLIDARITÉS
INTERNATIONAL



GRET
Professionnels du
développement
solidaire



Groupe
UR



ONEA
Office national de l'eau
et de l'assainissement

All systems go Africa

Approche Nexus Humanitaire- development –cohesion sociale dans le domaine de l'eau potable au Burkina Faso

All Systems Go Africa
19-21 octobre 2022

Richard Bassono
Gret Burkina Faso



Contenu

1. Approches
2. Résultats de l'approche concertée
3. Perspectives

Approches

Approches partenariales

- Conception du projet entre un consortium d'ONG humanitaire (SI), de développement (le Gret) et d'appui à la capitalisation (Groupe URD) en partenariat avec l'ONEA
- Développement de partenariat avec les communes
- Une phase préalable de construction participative du programme
- Travail avec le Cluster WASH et les autres ONGs humanitaire et développement

Les Diagnostics

- Diagnostic techniques conjoints avec l'ONEA déterminer les besoins
- Diagnostic de la gouvernance des services d'eau potable
- Plusieurs études approfondies : socio-anthropologique, hydrogéologique

Planification

- Schéma Directeur d'Urgence concerté



Lancement de projet, novembre 2021



Collecte des données, décembre 2021

Quelques solutions identifiées de manière concertée



Solutions techniques

- **Amélioration de la production:** raccordements de forages inexploités ou sous-utilisés (PMH/PEA), traitement de l'eau de forage contaminé à l'Arsenic
- **Sécurisation de forages fonctionnels:** solarisation/électrification, télégestion
- **Renforcement de la distribution** à travers des extensions, bornes fontaines (Séguénéga, Ouahigouya et Kongoussi)



Mission de réparation du groupe électrogène ONEA Titao, 2022

Quelques solutions identifiées de manière concertée

Solutions organisationnelles

- **Articulation avec les acteurs humanitaires** pour prendre en charge les actions purement urgences dans nos zones d'interventions (Titao)
- Appui à l'ONEA et aux communes pour la **coordination de l'action humanitaire dans leurs zones**
- Appui à l'ONEA pour le **maintien du service d'eau potable** dans la commune de Titao à travers les vols UNAS (fourniture gazoil)
- Appui aux communes pour la mise en place de **systèmes de gestion transitoire** des tous les ouvrages nouvellement réalisés et ceux dont le mode de gestion n'est pas formel



Mission d'approvisionnement de carburant du centre ONEA Titao, 2022

Quelques solutions identifiées

Solutions Institutionnelles

- Plan de résilience de l'ONEA face de la crise (plan de renforcement des capacités)
- 5 plans de renforcement des capacités des communes

Capitalisation

- Recherche-action pour améliorer nos pratiques : prise en compte des PDI, viabilité financière des services
- Evaluation Interactive avec mini-séminaire (EIMS)
- Capitalisation des approches pour diffusion



Plan de renforcement des capacités, 2022

Perspectives/défis



- Maintenir le service et une capacité d'action dans les zones à défis sécuritaires très élevé
- Flexibilité des bailleurs face aux situations volatiles de certaines zones (lignes de financement non dédiées)
- Moyens aux institutions pour mieux coordonner l'action humanitaire et développement

All systems go Africa

19 - 21 octobre 2022 | Accra, Ghana

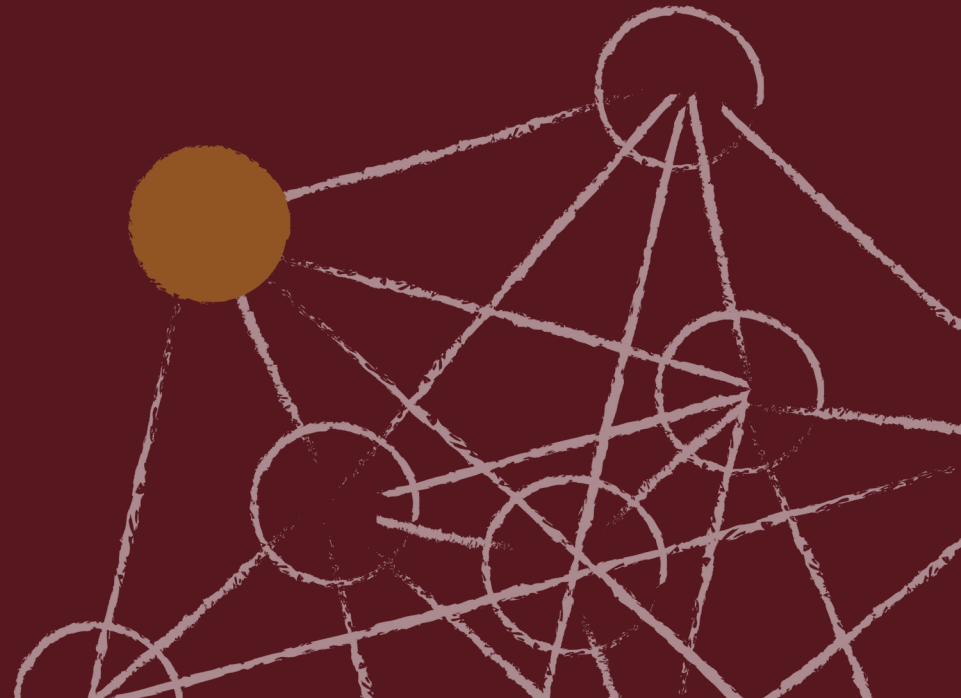
En savoir plus

<https://www.ircwash.org/all-systems-go-africa-fr>



Traduction / Translation

Lavuun Verstraete - <https://bit.ly/3eIr47m> (FR)



All systems go

Africa

System building in fragile contexts across the WASH,
Humanitarian Development, and Peace triple nexus

ETHIOPIA

Lavuun Verstraete, UNICEF Ethiopia

lverstraete@unicef.org

19 October 2022

All systems go Africa

19-21 October 2022



Contents



1. Ethiopia context
2. WASH emergency resilience and peace triple NEXUS framework
3. Experiences and mechanism to respond to context
4. Conclusion and way forward

Ethiopia context - Extremely fragile with multiple displacements

IDP: 2.8M | PIN: 18.7

Requirement \$133M

Shocks and stressors

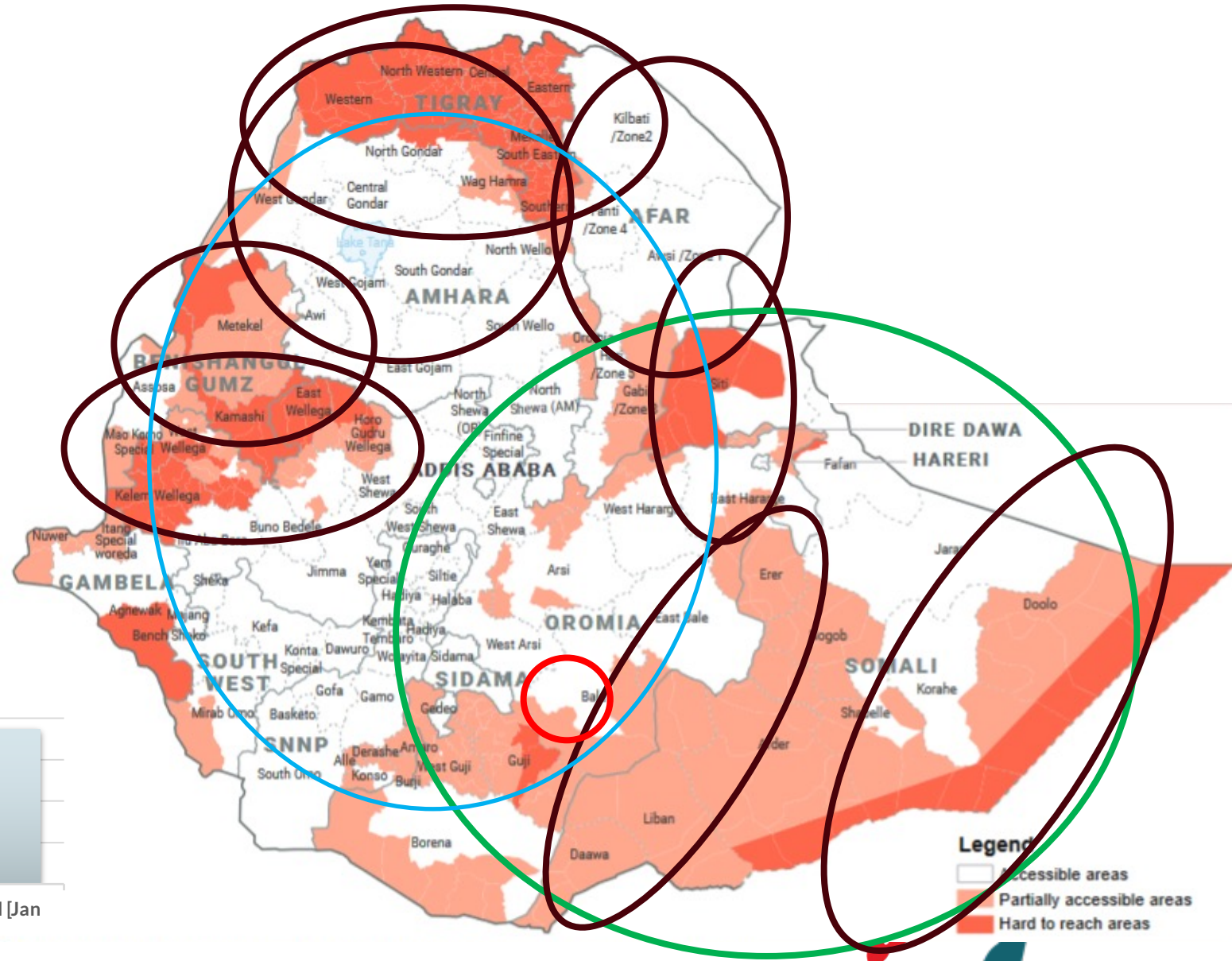
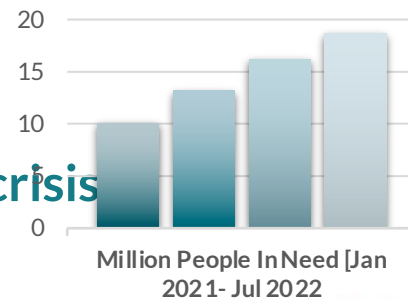
Security related

Climate induced (drought/floods)

Health related (cholera)

Characteristics

- Protracted/recurring crisis
- Worsening scale (now 5th response globally)



Source: OCHA, August 2022

Ethiopia context - Extremely fragile with multiple displacements

IDP: 2.8M | PIN: 18.7

Requirement \$133M

Shocks and stressors

Security related

Climate induced (drought/floods)

Health related (cholera)

Refugees: 875,000

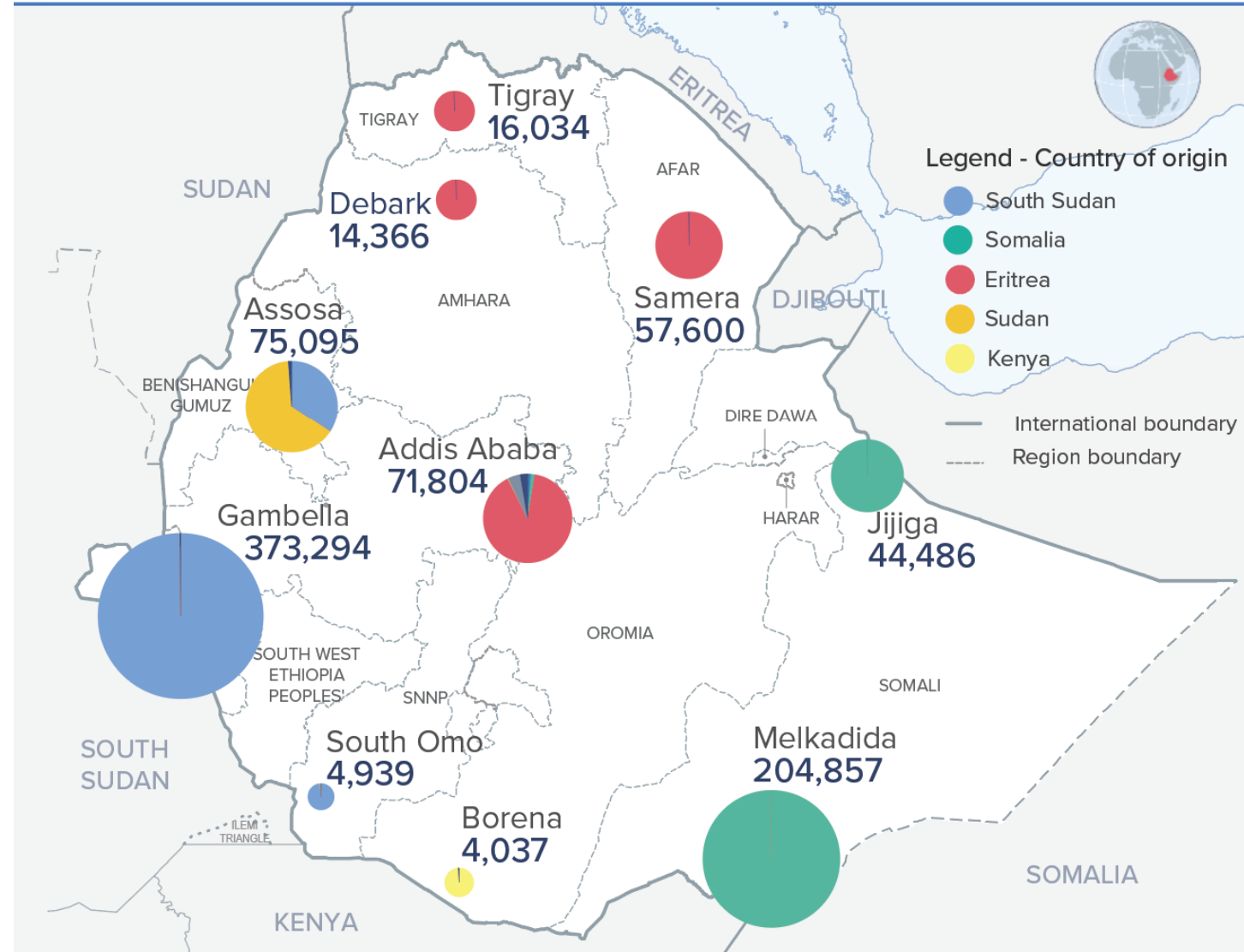
Characteristics

- Protracted/recurring crisis
- Worsening scale (now 5th response globally)

ETHIOPIA

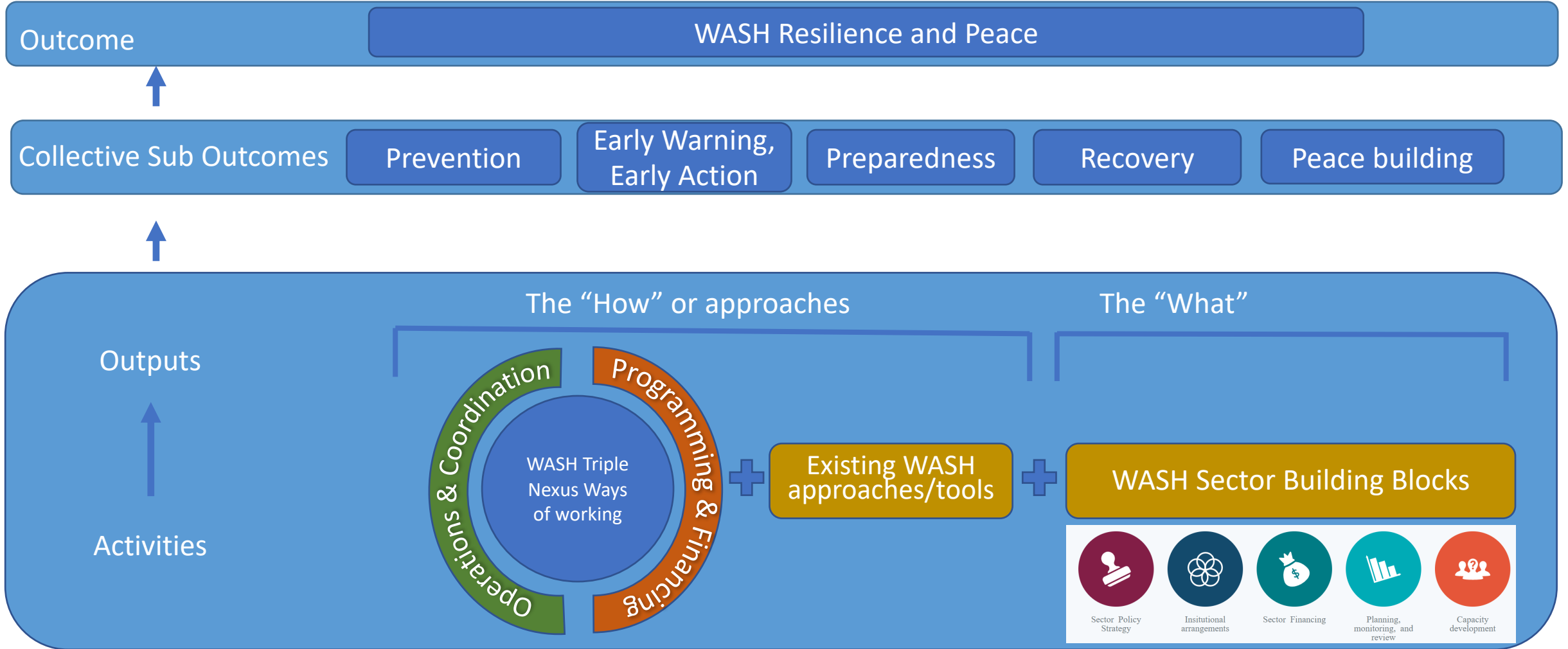
Refugees and Asylum-seekers

August 2022



The boundaries and names shown and the designations used on this map do not imply official endorsement or acceptance by the United Nations.

WASH emergency resilience and peace triple NEXUS framework



Emergency response through WASH cluster

70 partners across the country

8 regional coordination hubs close to response

Collaboration with government counterparts

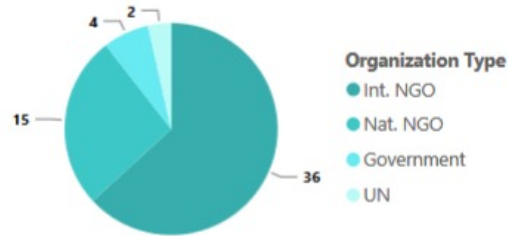


WASH Cluster Operational Presence Map August 2022

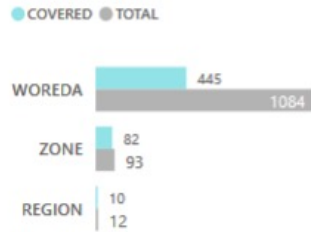


Information represents WASH Cluster partners who have reported On-going & Completed activities using 4W with an Activity End Date in January to August 2022. The map represents WASH cluster partners 4W report data.

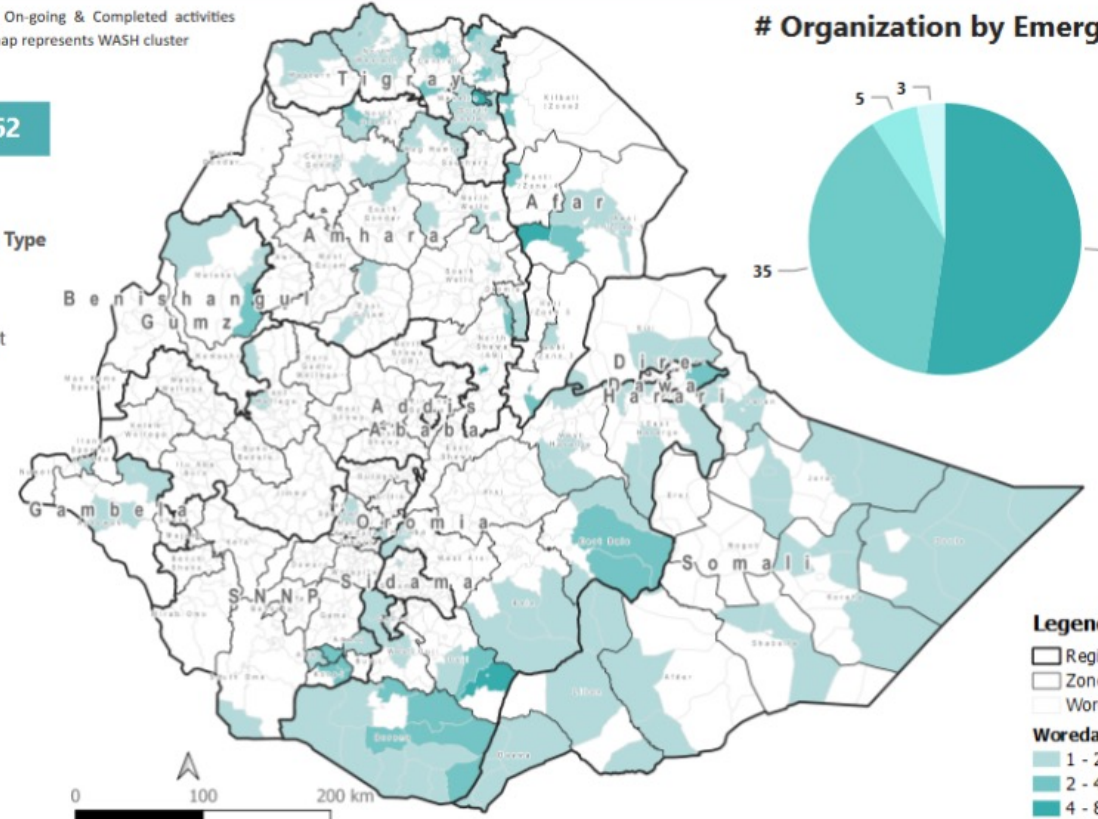
#Organization: 70 #Donor: 62



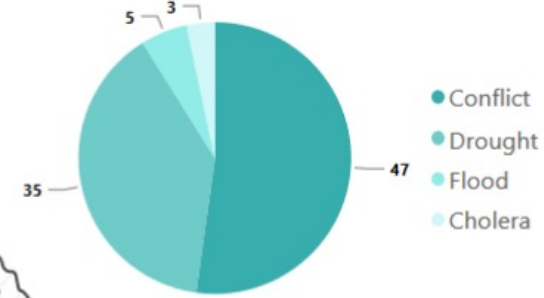
Response Locations



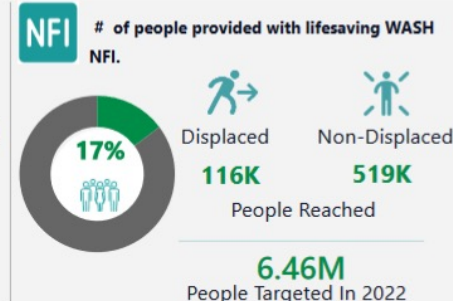
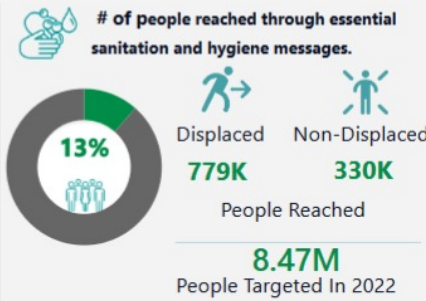
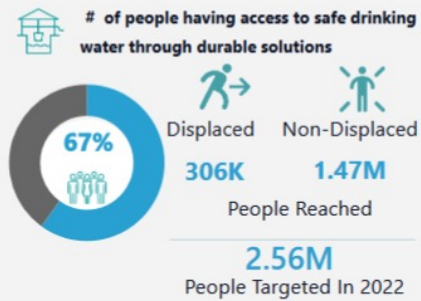
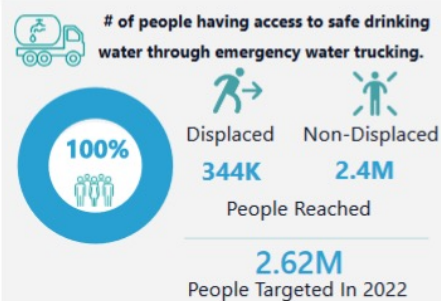
Contact Details
Cluster Coordinator: Laure Anquez: lanquez@unicef.org
IMO: Hudad Barry, hibrahima@unicef.org
ETHIOPIAN WASH CLUSTER



Organization by Emergency Type



Date of Creation : 20/09/2022 The boundaries and names shown and the designations used on this map do not imply official endorsement or acceptance by the United Nations.



Ethiopia Rapid Response Mechanisms (RRM)

Principles:

- Early warning system
- Prepositioning of supplies/partners with dedicated funds
- Standardised approach/assessment/reporting:
alert > rapid assessment > intervention [first line, then second line] > monitoring
- Timebound first-line response
- Coordination with WASH cluster

Financial & operational pipeline facility

Ethiopia has several RRM (UNICEF/BHA, ECHO/IRC, OCHA/SWAN)

Strengths: fast; agile; can quickly fill gaps in emergency response

Opportunities: allows also for system rehabilitation

Challenges: in protracted situation -> limited provision for sustainable exit or post construction support; small rehabilitation only; needs larger than RRM capacity



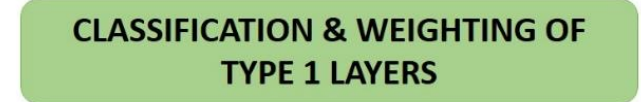
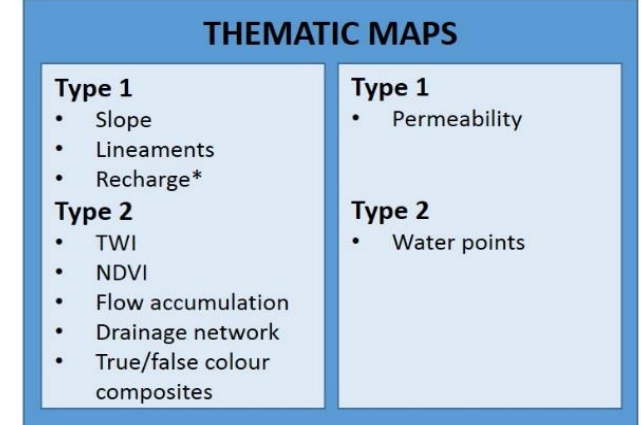
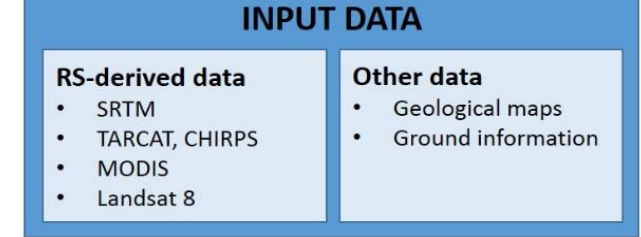
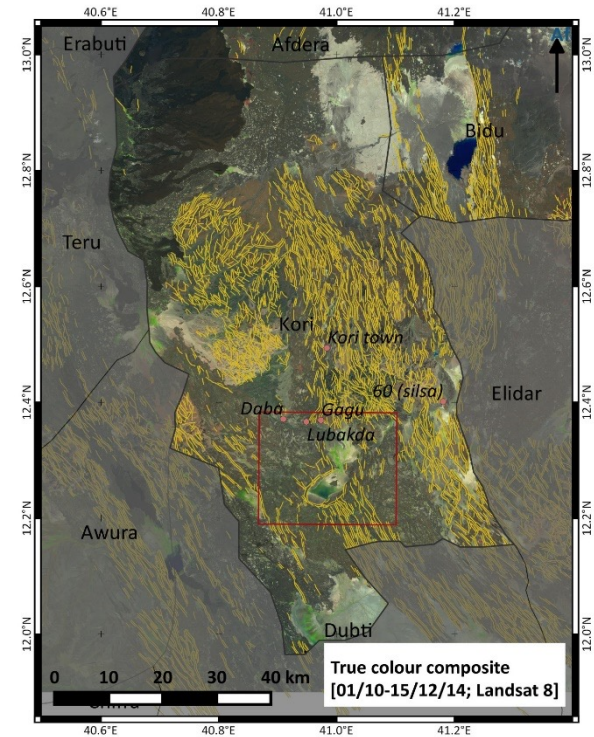
Early action/preparedness – Groundwater Suitability Mapping

Innovation and Climate Resilience

Strategic partnership between UNICEF, Ministry of Water and Joint Research Center (EU) – 2018-2020

Increasing deep well success rates from 40-50% to >90% in the Lowlands

More than 100 woredas mapped through UNICEF/EU and UKAid, currently expanding with UNICEF and WB funding



Data acquisition, processing & RS analysis

Overlay analysis

<https://gw4e.acaciadata.com/>



Early action/preparedness – Groundwater Suitability Mapping

Groundwater Suitability Map

Layer	Parameter	Factor weight	Class and class weight			
			1	2	3	4
1	Geomorphology	0.5	Flat low lying grabens 50	Gentle to flat horst 30	Gentle to steep horst 15	Steep and mountainous 5
2	Drainage/drainage density	0.25	High 70	Moderate 30		
3	Hydrogeology/permeability	0.23	High 60	Low to moderate 35	Aquiclude 5	
4	Structure/structural density	0.22	Major (regional) 55	Moderate 25	Local 15	Poor 5
Total		1	58.4	30.05	8.95	2.6
Classification			High	Moderate	Low to moderate	Low

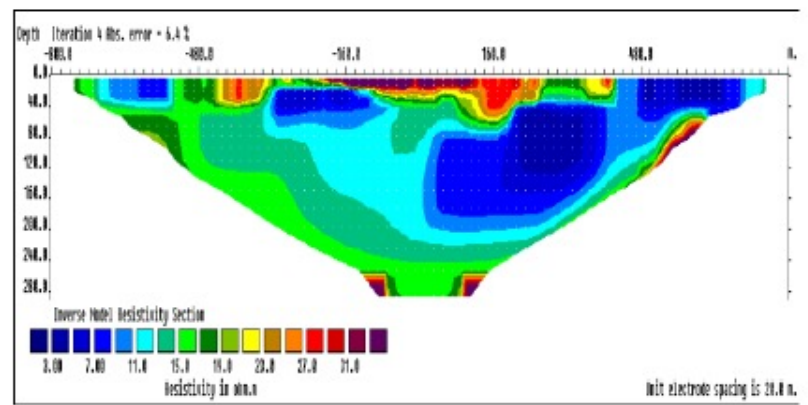
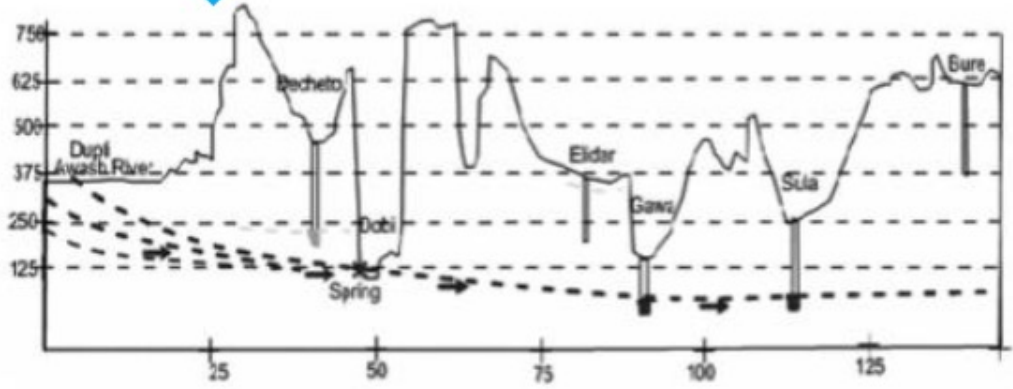
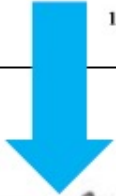
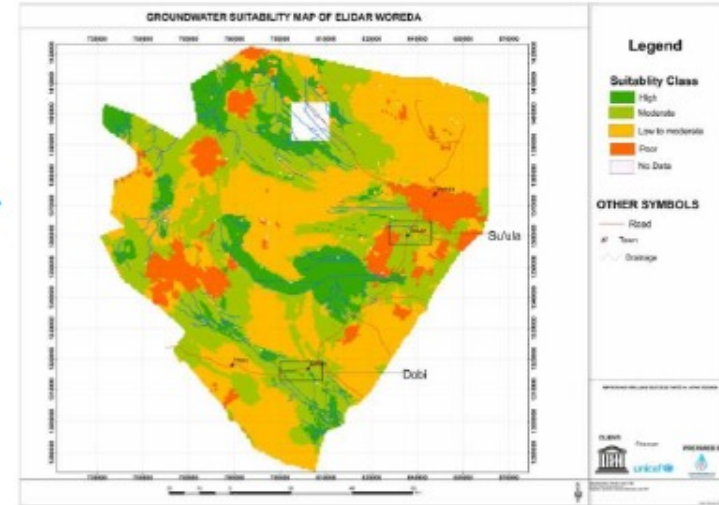


Figure 5.5. 2D Resistivity Imaging section, Musley.



Climate Resilience – Shift to durable systems

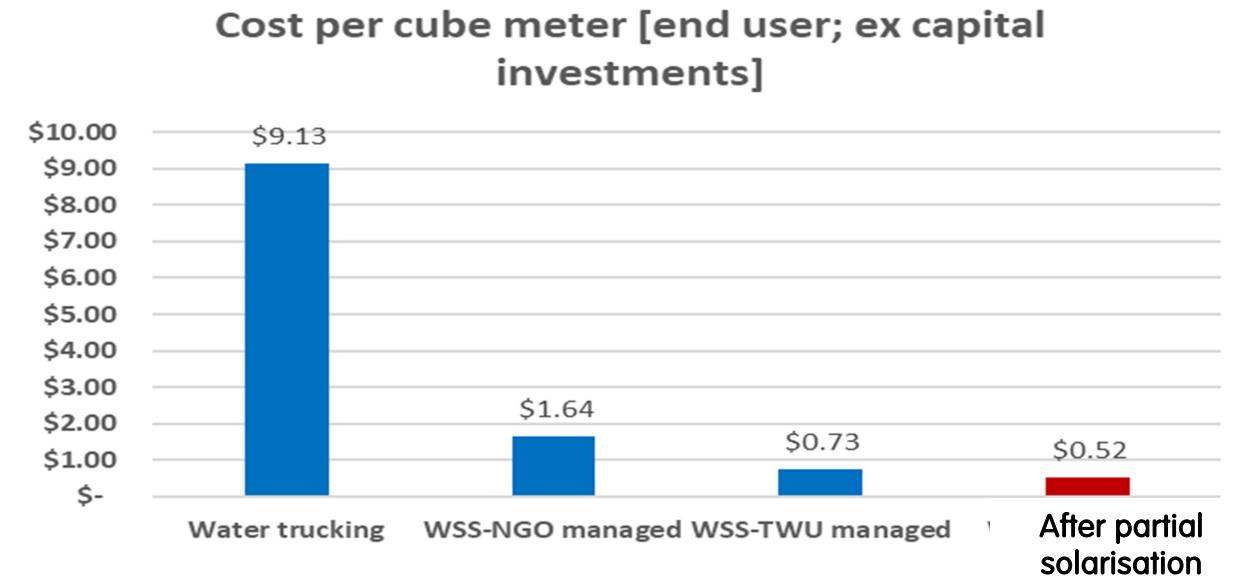
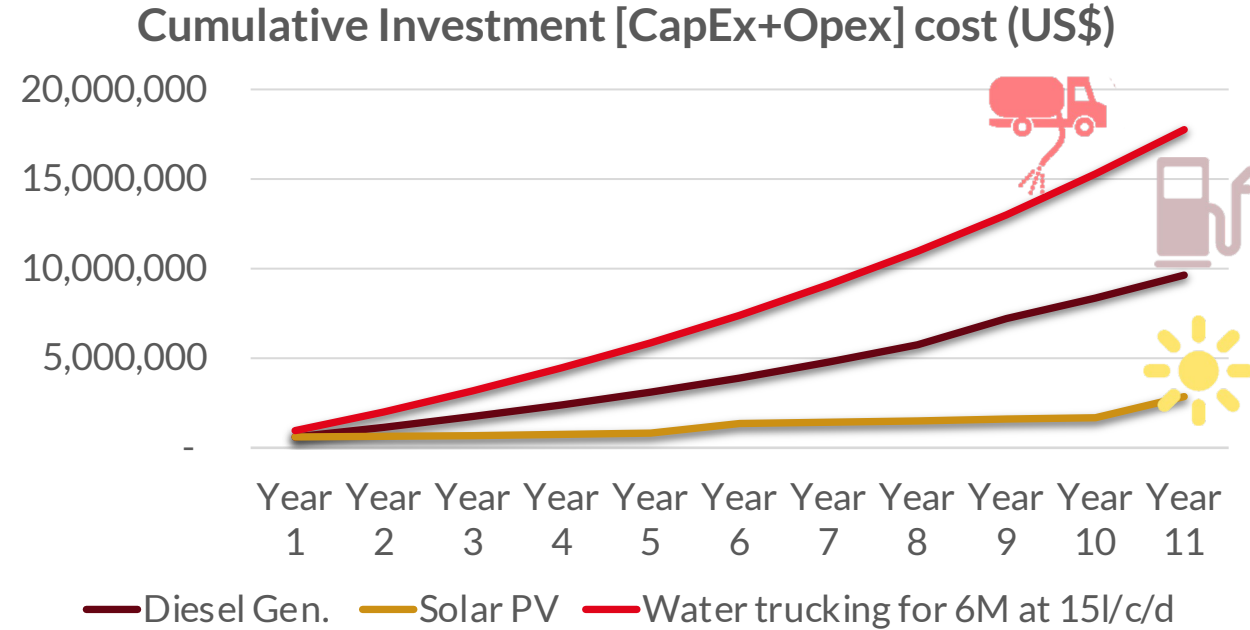
Business case for 10 yr life cycle of scheme in drought prone area; serving 20,000 people (Sept 2020):

- Water trucking operations (15l/c/d for 6 months/yr)
- Nearly 3 X cost of diesel-powered water systems (50l/c/day for 12 months/yr)
- Nearly 10 X cost of solar- powered systems (50l/c/day for 12 months/yr)



Cost analysis for durable system system in Refugee host systems: Shift from water trucking to Town Water Utility Managed water service delivery hosting 220,000 refugees and host community of 30,000 people – cost per m3

- Utility cost with cost recovery model = sustain operation and maintenance
- Note: analysis prior to recent fuel cost increases



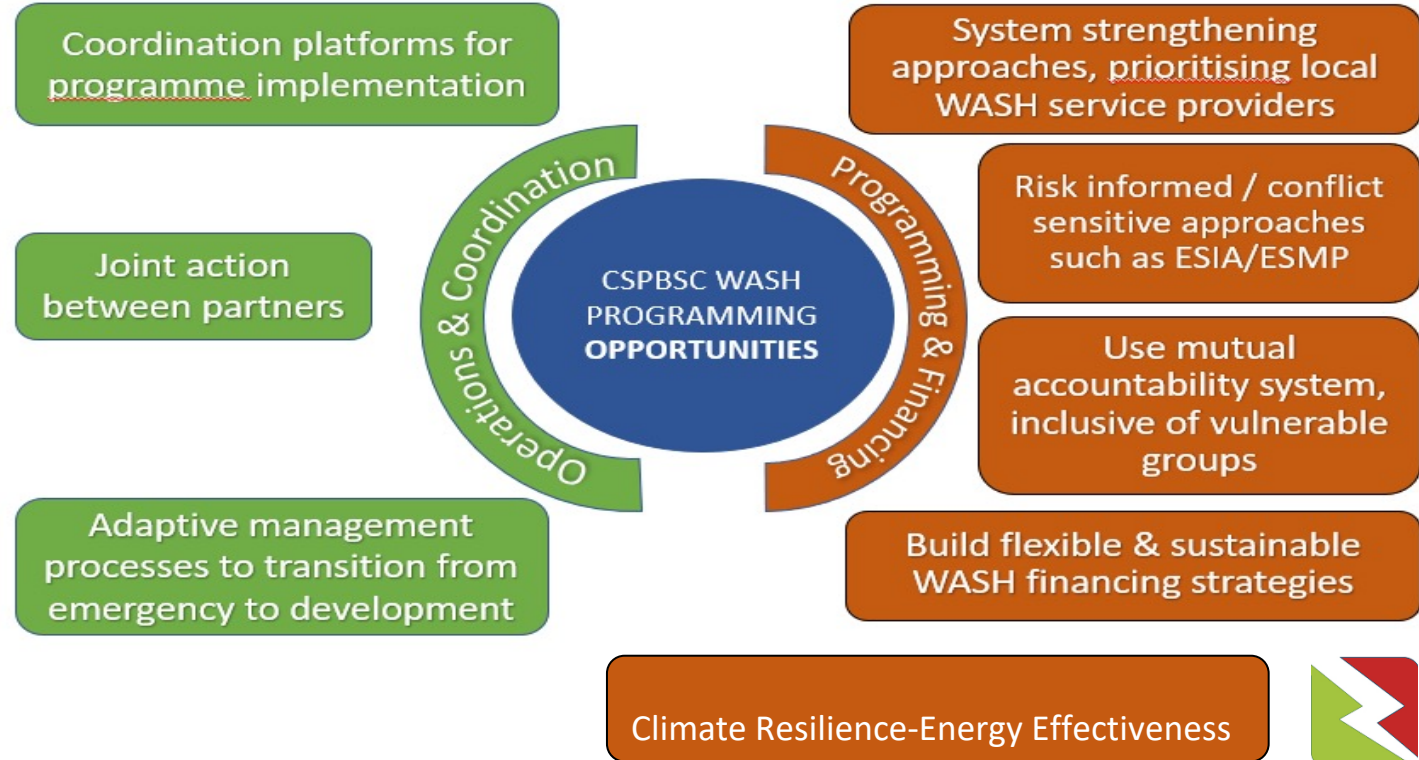
WASH for Peace – Conflict Sensitive Programming in fragile contexts

<https://www.unicef.org/ethiopia/documents/conflict-sensitivity-peace-building-and-social-cohesion-guideline-wash-programming>

Integrating conflict sensitive and peacebuilding approaches & Leveraging programmatic entry points in conducive sectors - WASH



Entry points and opportunities



WASH for Peace - some examples & experiences from Itang

Risk situation: In Jan 2020, low water production in system delivering water to 220,000 refugees and 30,000 hosts

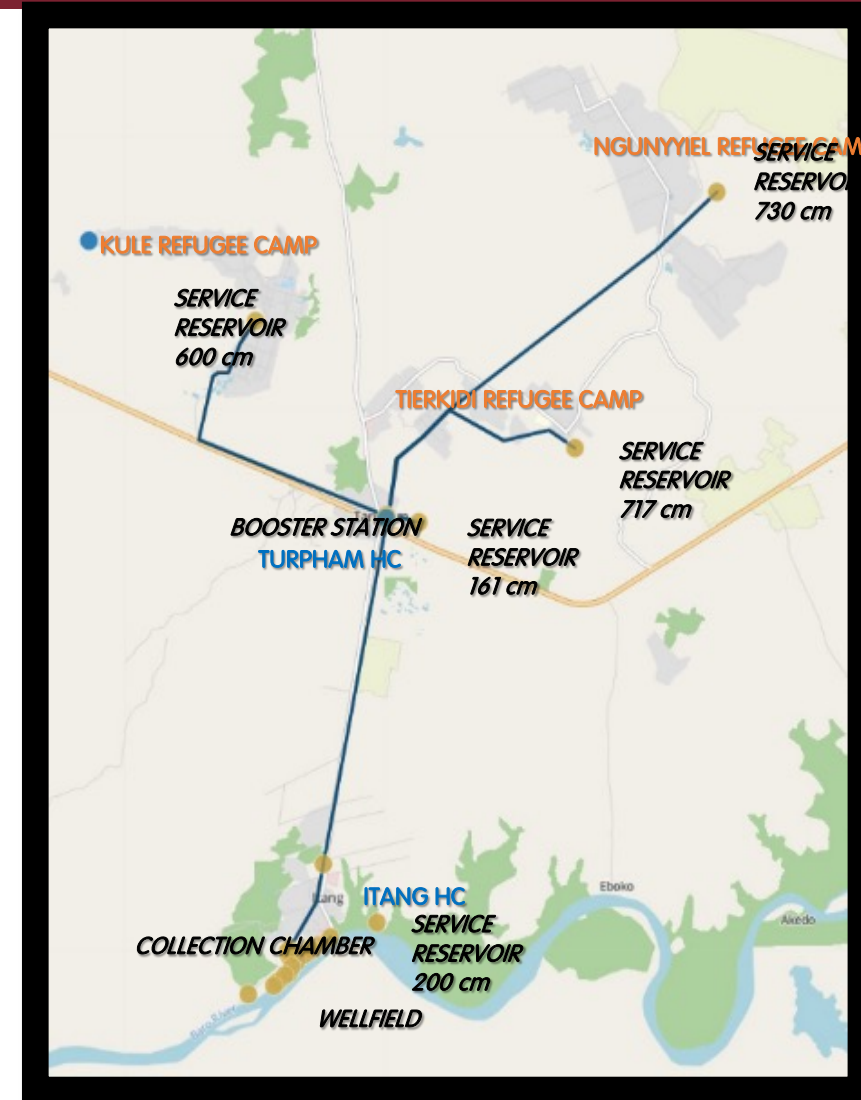
Due to:

- 1) Collapse of several wells and powerhouses
- 2) Limited access to spare parts and
- 3) Ethnic diversity between hosts and refugees

>> **Conflict and vandalism of WSS by host community**

How did we resolve the situation: use entry points

- Intensify coordination
- Multi-stakeholder Contingency plan / Business continuity plan with (i) clear responsibility allocation; (ii) budgeted *short term, medium- and long-term interventions*; (iii) fast tracking upgrade of EM equipment
- Water Utility strengthening with strong O&M and Business plan for full cost recovery



Conclusion and way forward

Need to cover **whole spectrum from prevention to peace building**

Financial and operational mechanisms to respond specifically to **emergency response** remain critical

Resilient systems can support fragile situations, but require more time and resources; this is even more challenging in a fragile context

Need to bridge and develop mechanisms / funding facilities that bridge nexus between emergency and development

THANK YOU

Lavuun Verstraete, UNICEF Ethiopia
lverstraete@unicef.org

All systems go Africa

19 - 21 October 2022 | Accra, Ghana

Find out more

www.ircwash.org/all-systems-go-africa



All systems go Africa

19 - 21 octobre 2022 | Accra, Ghana

En savoir plus

<https://www.ircwash.org/all-systems-go-africa-fr>

