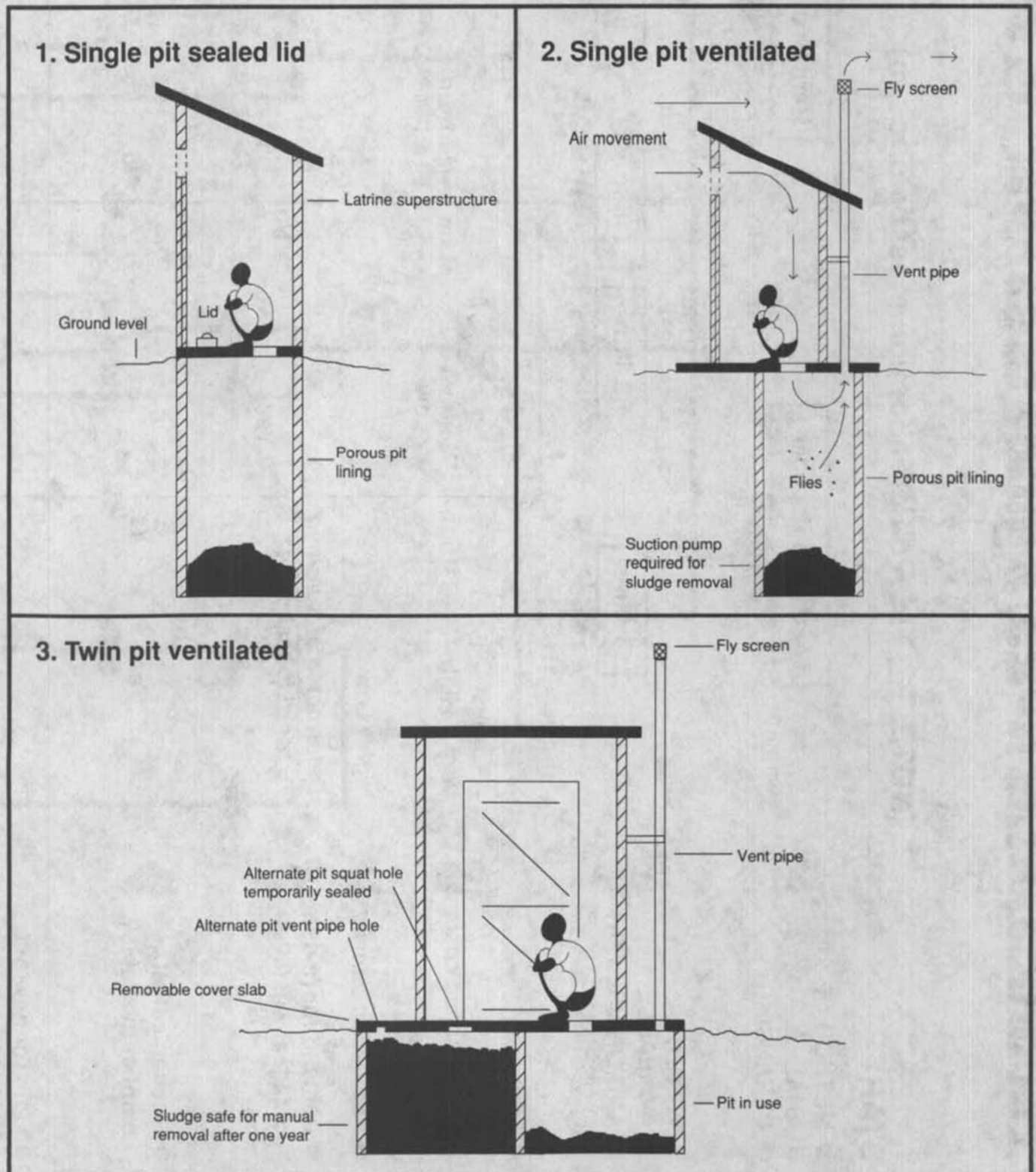


Technical Brief N°23/A guide to sanitation selection

Drawings 1-6 illustrate the principal options for on-site sanitation. The *Guide to Sanitation Selection* on the centre pages may be used to determine which option is likely to be most effective according to the method of ahal cleansing, water availability and willingness to pay.



Technical Brief No 23/A guide to sanitation selection

(NOTE:  = A different option must be chosen)

START

● METHOD OF ANAL CLEANSING

Water or soft paper

● WATER AVAILABLE AND/OR USE FOR FLUSHING

10 litres
3 litres
1 litre
0 litres

Hard or bulky materials

● Affordability :- Capital and maintenance costs (Note 1)

Very High High Medium - Low Very Low

● Population density

High Low

● Demand for re-use of faecal waste?

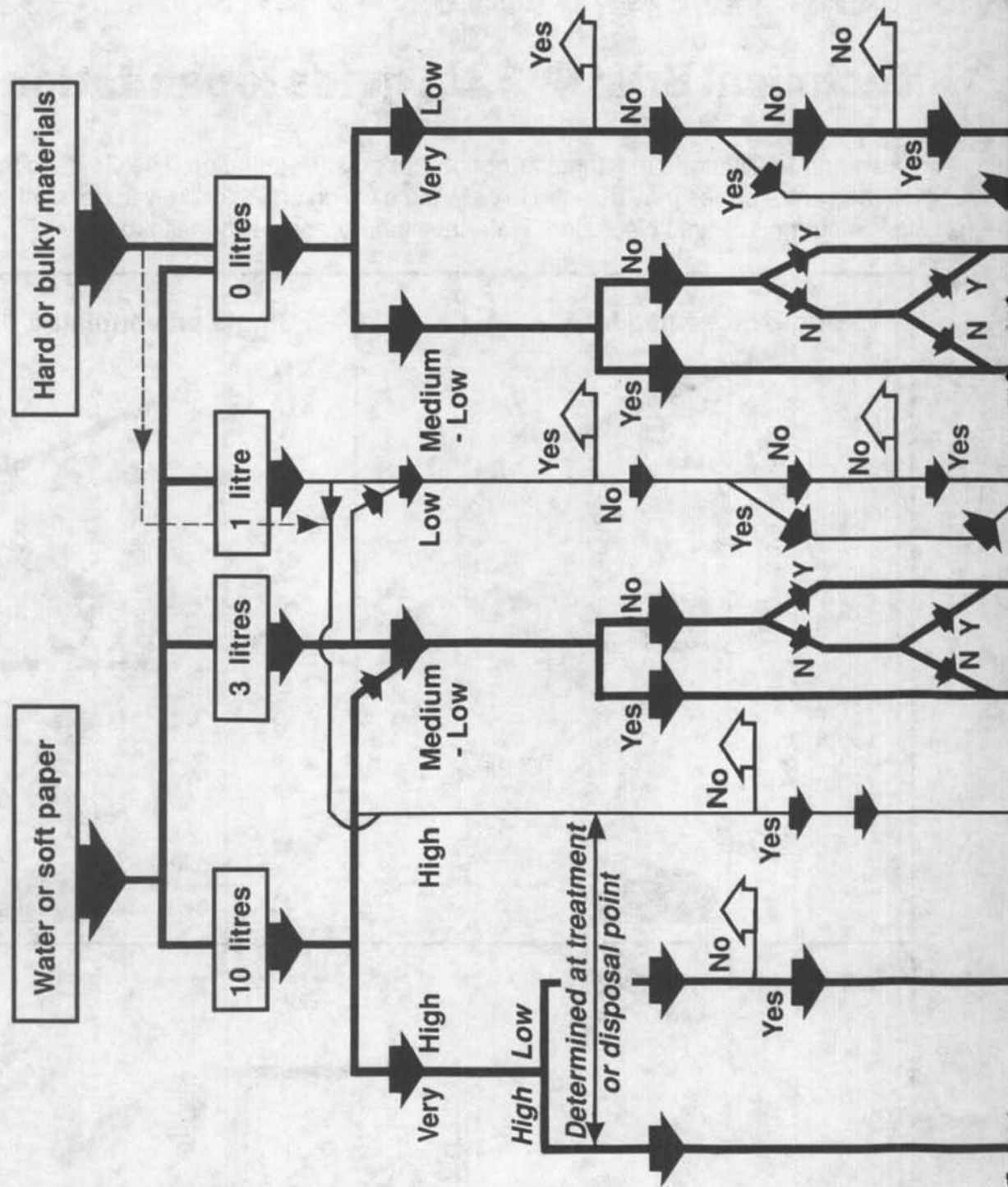
Determined at treatment or disposal point

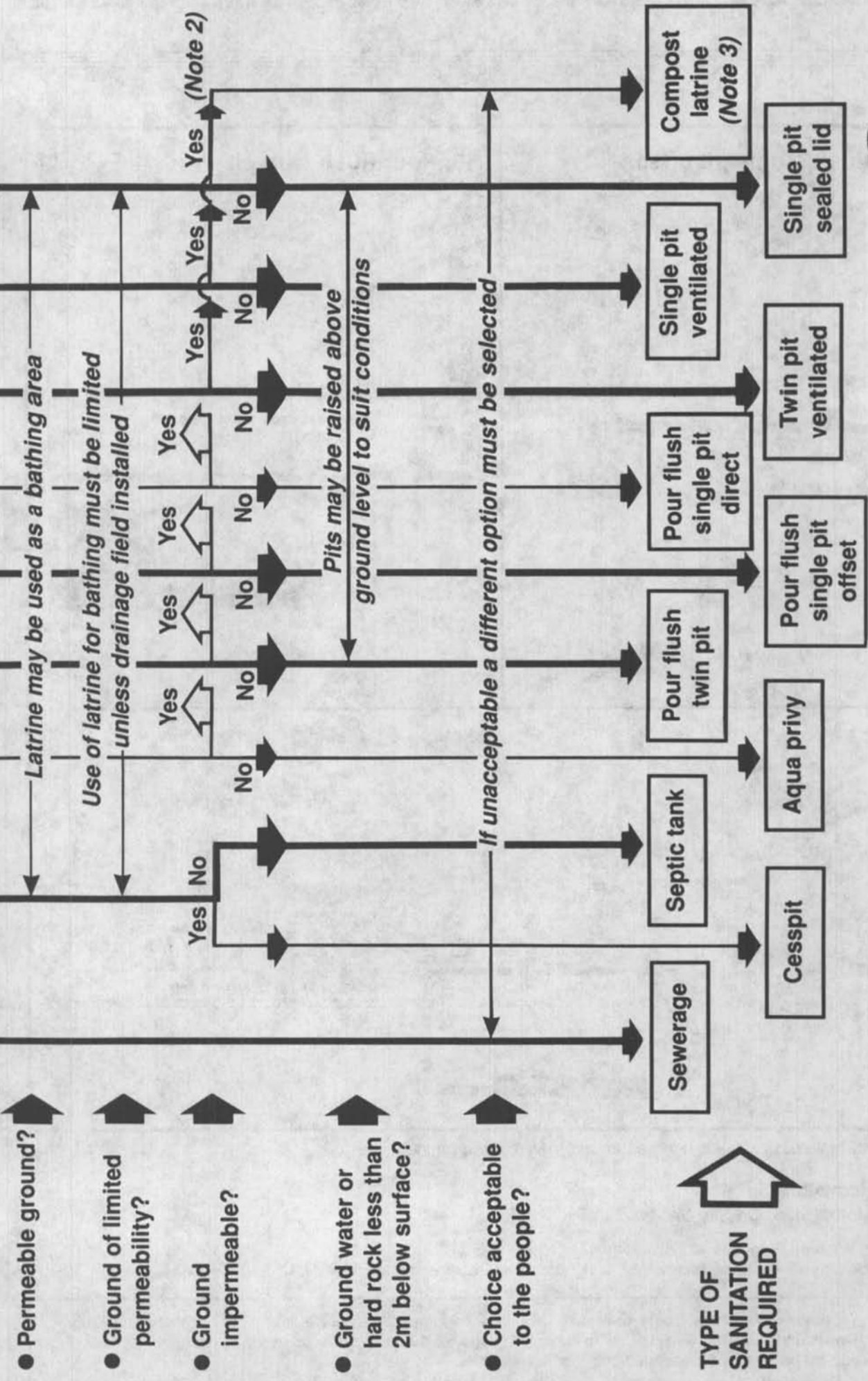
● Mechanical pit emptier available?

No Yes

● Land for new pits available OR ground suitable for extra-large pits?

No Yes





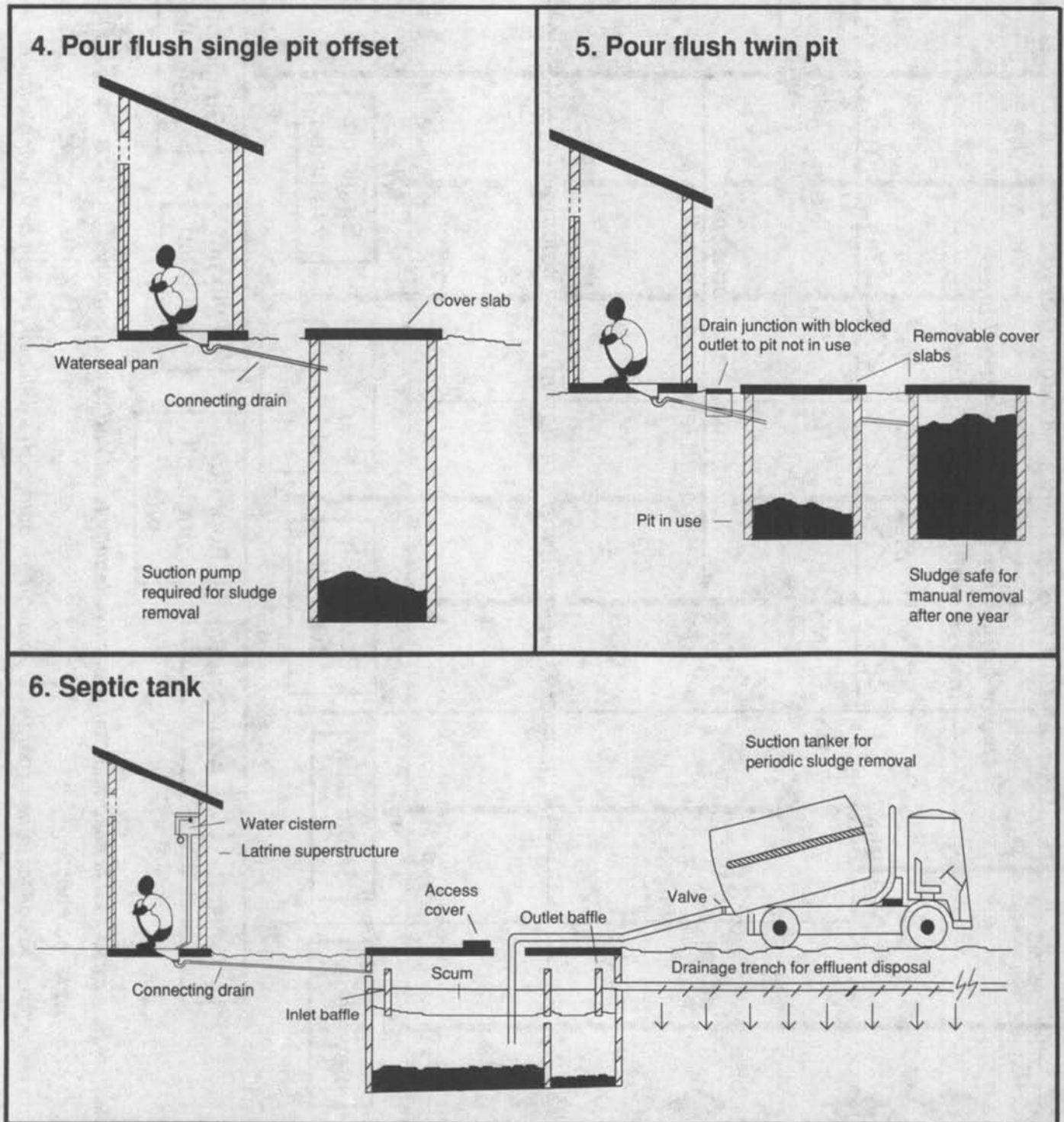
Note 1: Not all possibilities are illustrated as it is assumed that water availability is related to affordability

Note 2: Use extra large pits or consider composting

Note 3: Also dependent on willingness to collect urine separately, demand for compost, availability of ash or vegetable matter etc.

TYPE OF SANITATION REQUIRED

Technical Brief N°23/A guide to sanitation selection



Note: In all systems, seats may be used as an alternative to squatting

For further information:

Franceys, Pickford, Reed, *On-Site Sanitation*, WHO 1989.

Text and design: Richard Franceys Illustrations: Rod Shaw
 WEDC, Loughborough University of Technology, Loughborough, Leicestershire LE11 3TU, UK.

Twenty-third in a series of Technical Briefs for fieldworkers. Further copies are available from IT Publications, 103-105 Southampton Row, London WC1B 4HH, UK, as follows: 1-4 copies £0.50 each, 5-49 copies £0.25 each, 50+ copies £0.12 each. They will be sent by air-speeded post where available.