

Burkina Faso: a water sanitation and hygiene information sheet



Burkina Faso

The Sustainable Development Goals have introduced a new era of working towards ensuring the availability and sustainable management of water, sanitation and hygiene (WASH) services to deliver target 6 (SDG 6) by 2030.

In Burkina Faso, a unique collaboration aims to achieve this goal through collective action. Their activities are concentrated in one municipality (commune) - Banfora – and are guided by a WASH master plan. This plan was developed by local government and partners in 2018 and it sets out the steps needed to achieve SDG 6 in the municipality.

This hand-out provides information about the status of WASH at national and municipal levels and outlines how IRC and a coalition of partners are working together with Government to inspire and catalyse change in the country.

Quick facts

- Capital:** Ouagadougou
(pop. 2,200,000 as of 2015)
- Population:** 20,107,509 (2017)
- Population density:** 64/km² (165.8 mi²)
- Population growth:** 2.9% per annum
- Urban population growth:** 5.9% per annum
- Area:** 274,200 km² (105,870 m²)
- Major languages:** French, indigenous languages
- Gross domestic product (GDP, nominal):** US\$13.598 b.
- GDP growth:** 6.5% per annum
- Per capita income (PPP adjusted):** US\$1,667 (CID)
- Human Development Index:** 0.423 [low · 183rd]
- Gini Index (income inequality):** 39.50

Sources: CountryWatch UNdata, UNDP (2016), World Bank (2017)

Burkina Faso is a landlocked, mostly rural country in West Africa. High population growth and limited natural resources result in poor economic prospects for many citizens, and the country is fourth from the bottom in the UN Human Development Index.

Water, sanitation and hygiene

Burkina Faso has been praised as a model country in Francophone West Africa, particularly for water, and it generally outscores its peers in terms of WASH policies and institutions. Urban access is nearly universal, and the urban utility (ONEA) is one of the best in Africa.

However, achieving universal access to water for rural residents and funding large-scale sanitation uptake remain major challenges. The Government currently faces several obstacles in delivering the new service levels by 2030 as stated in its plans.

Although 75% of the population now has access to improved water sources, only 47% of households have access to improved sanitation and 47% of people still practice open defecation (JMP 2017).

Burkina Faso's status in 2017 against SDG indicators is shown in **Figure 1** below.

About one third of people living in rural areas lack even basic access and another 30% use an improved infrastructure that provides only a very limited service. The challenge regarding sanitation remains enormous – 63% of the rural population still practice open defecation.

Urban areas present a different challenge. Most people (93%) use a latrine, but only 2% are sewer-connected and most waste is untreated. The outcomes for hygiene are as weak as they are for sanitation, with only 8% of rural households having a handwashing station with soap and water.

The three biggest access challenges for Burkina Faso, are:

- reducing open defecation in rural areas;
- improving access and the quality of rural water services; and
- helping people climb the sanitation ladder in urban areas.

Achieving universal access to WASH for rural residents and funding large-scale sanitation uptake are major challenges that need to be overcome.

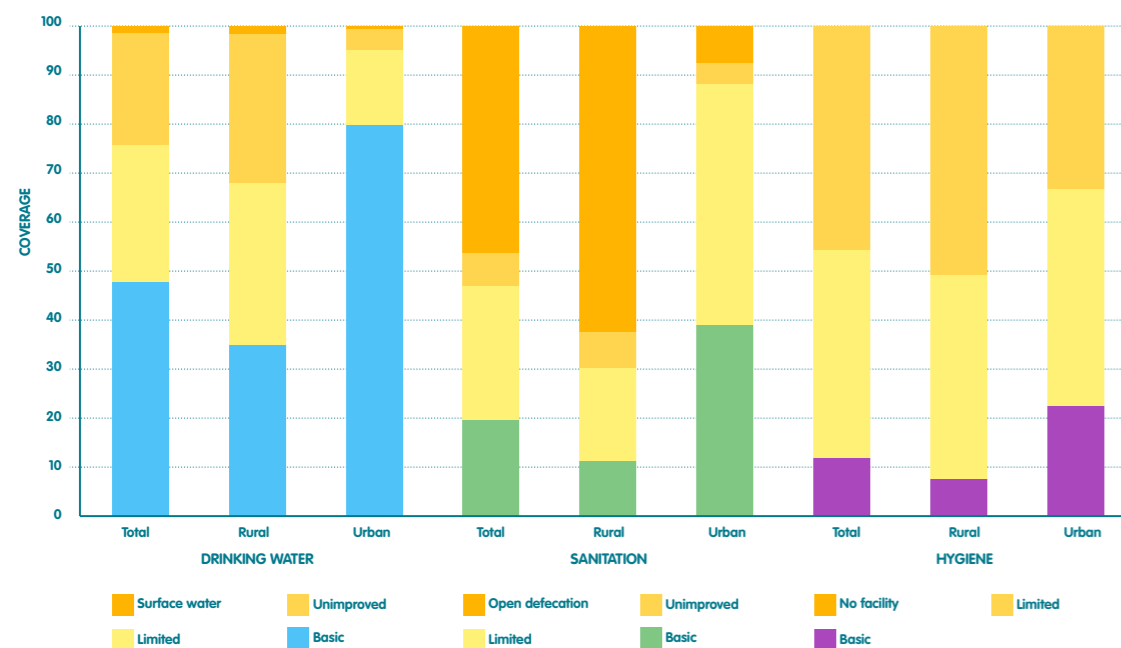


Figure 1 Burkina Faso's status in 2017 against SDG 6 indicators

Government involvement in WASH

The National Programme for Water Supply (PN-AEP 2016-2030) and the National Programme for Sanitation (PN-AEUE 2016-2030) define the country's approach to WASH.

Administrative structure and funding

The National Programme for Water Supply and Sanitation (2007-2015) decentralised the management of rural WASH services. Institutional responsibility for service provision in rural areas rests with the *communes* (municipalities), the lowest administrative unit above villages, akin to the 'district' level in other countries. Burkina Faso has 302 rural *communes* whose responsibilities are as follows:

- The Ministry of Water and Sanitation defines public policies and sets regulation and sectoral monitoring and evaluation targets.
- The National Utility (National Office for Water and Sanitation – ONEA) plans, develops, extends, operates, maintains and delivers water and sanitation services in cities with more than 10,000 inhabitants.
- The national government or its development partners initiate most of the rural projects. Management is then entrusted to the municipalities.
- Municipalities are the owners of WASH assets and are responsible for management, which can be delegated to private entities, associations or communities. However, municipalities do not receive enough funding to support the extension and sustainability of services.

The main funding sources at national level for WASH are as follows:

- Burkina national government: Budget allocation for rural water and sanitation (percentage of GDP)*11 (2014) US\$ 65.37 million (0.5%)
- Development aid: DANIDA (Denmark), the World Bank, the AfDB, AFD (France), KfW/GIZ (Germany), UNICEF, the European Union, SIDA (Sweden), JICA (Japan), Chinese cooperation, and UN-Habitat. NGOs and "decentralised cooperation" (such as twinning arrangements) exist mainly in rural areas and account for less than 5% of aid.
- Total official development assistance spent on water and sanitation in 2017: US\$ 70.5m.

Policy priorities

The Water Act (2001) recognised the importance of clean water, decent toilets and good hygiene. The Government has protected five water basins and created a legal framework to supply water to people across the country.

- Capital investment is mainly funded by development aid in the form of grants and loans through projects or budget support. Only 1/3 of the sector's estimated financing needs are currently covered.
- General taxes and duties are mainly used to pay the operating and salary costs of the state (at central and regional levels). Commune budgets provide some capital investment, but this is small (a handful of boreholes).
- In the cities, the recovery of tariffs allows ONEA to deliver the service and to ensure the maintenance of the facilities, thanks to a system of cross-subsidy (the excess financial balance sheet of the big cities, balances the deficit of the smaller cities, where consumption is lower). Part of the funds from this tariff also enables ONEA to renew equipment or to build latrines.
- In rural areas, the tariff is barely enough to cover the operation and maintenance costs of small networks and boreholes equipped with handpumps. Unit consumption is too low and the profitability for operators slim or non-existent.
- The State budget has been mainly spent on amongst others security issues, to the detriment of the WASH sector.

“Nobody in Banfora currently enjoys safely managed water or sanitation services as defined in SDG 6. Sixty-nine percent have access to a basic water service, 60% are using unimproved sanitation services and 8% of the population is still defecating in the open.

In addition, the population growth from 2017 to 2030 is estimated at 53%.

Our vision is clear. In 2030, the dynamic communal governance will make Banfora the standard in terms of access to sustainable drinking water and sanitation services everywhere, for everyone and at any time. We want Banfora to become the reference at national level and even beyond.”



M. Aboubakar Héma
Mayor of Banfora

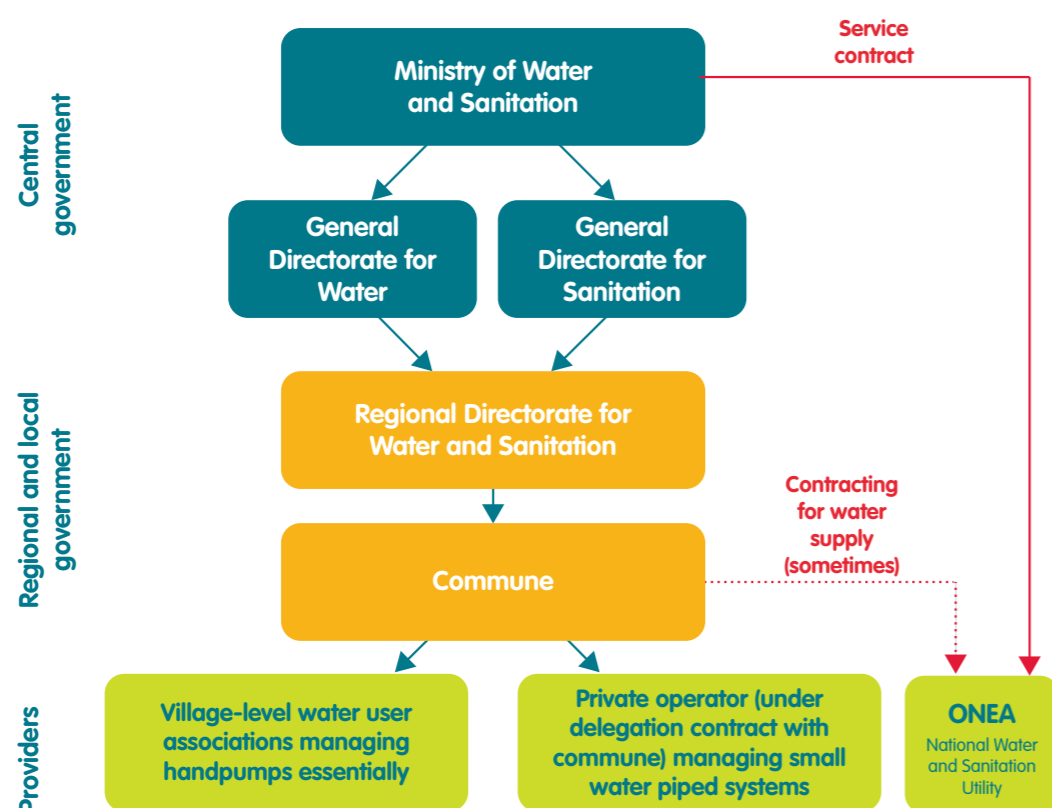


Figure 2 Institutional structure of the WASH sector in Burkina Faso

Emerging issues

To achieve the SDGs, the sector needs to restructure if it is to provide quality service to all citizens. A few issues and debates are emerging:

- The urgent need to reform the sector, accelerate the extension of services, professionalise the delivery of services and strengthen interdepartmental cooperation within the governmental entities.
- The need to review and change financing models to promote sanitation and hygiene. These should have a much stronger emphasis on Community Led Total Sanitation (CLTS) or community empowerment and solidarity financing mechanisms. The latter could include Sanithon; Fasotoilettes; proceeds from LONAB, the national lottery; the CNSS pension agency; as well as private companies’ corporate social responsibility initiatives. Increased support from the Ministry of Finance will be essential to bring about this model of alternative financing.
- The need for a more robust strategy to promote the provision of sanitation and hygiene services by the private sector. This will in turn require expertise from the Ministry of Trade to stimulate the involvement of donors working to promote the private sector.
- The urgent need to operationalise the public hygiene law, which includes several essential provisions to successfully achieve SDG 6.2. This is primarily the responsibility of the Ministry of Health. Sustainable hygiene and sanitation cannot be improved if the sanctions already provided for by the law against acts of pollution, such as open defecation, are not enforced.

By the end of 2016, Burkina Faso’s presidential commitment to the water sector was phrased as ‘no more carrying of water, and a healthy living environment by 2020’. There were budgeted national programmes for SDGs 6.1 and 6.2. It was the start of the process for revising the rural water supply strategy in order to improve service quality.

“The baseline data informed the master plan, also called strategic plan, that is now leading to structural reform in local government. A big milestone for the district, which was celebrated in the presence of more than 100 partners and which marks the start of the actual implementation phase that will bring universal coverage to all people in Banfora.”



Juste Nansi
Country Director, IRC

Quick facts about Banfora district



About Banfora

Area: 934 km²

Population: 153,574 living in 22 villages and 15 small towns
Located 450 km from the political capital (Ougadougou) of Burkina Faso

The case of WASH in Banfora

Background

A robust baseline was developed in order to understand the strengths and weaknesses of the current systems and the services being provided. From this baseline, actions for improvement can be prioritised. Using this data, local government and its partners are developing, changing and scaling a systems approach. A baseline for Banfora was conducted in 2017 and is updated regularly as part of a joint review of progress towards shared goals of strong WASH systems delivering services to everyone.

Since 2017, a coalition of partners is working to deliver universal access to everyone in Banfora. As a first step, this coalition supported the Mayor, Mr. Aboubakar Héma and his team in developing a master plan to deliver WASH services to everyone by 2030. The commune and its partners are now working together to deliver this plan: they are mobilising stakeholders, securing funds, commissioning support and monitoring progress.

Under Banfora’s political and technical leadership, the coalition of local partners is also supported by a growing partnership of external actors, including the Conrad N. Hilton Foundation. The implementation of the master plan in Banfora is just the first step, it will serve as a national model and reference point to ensure that sustainable WASH services are available to everyone, for good, by 2030.

Water and sanitation service levels

As illustrated in the graph in **Figure 3**, the drinking water supply is based on surface water and groundwater from boreholes. In urban areas, water is supplied from Moussodougou dam, whereas rural areas use two simplified drinking water supply systems and 227 boreholes with hand pumps. Here, the main challenges include the high number of people who still use an unimproved water source (8%), which is above the national average.

An important challenge regarding sanitation – on top of open defecation and the high numbers of people with unimproved services – is that now more than 90% of faecal sludge is discharged into the environment untreated. As far as handwashing is concerned, very few households are equipped with handwashing facilities.

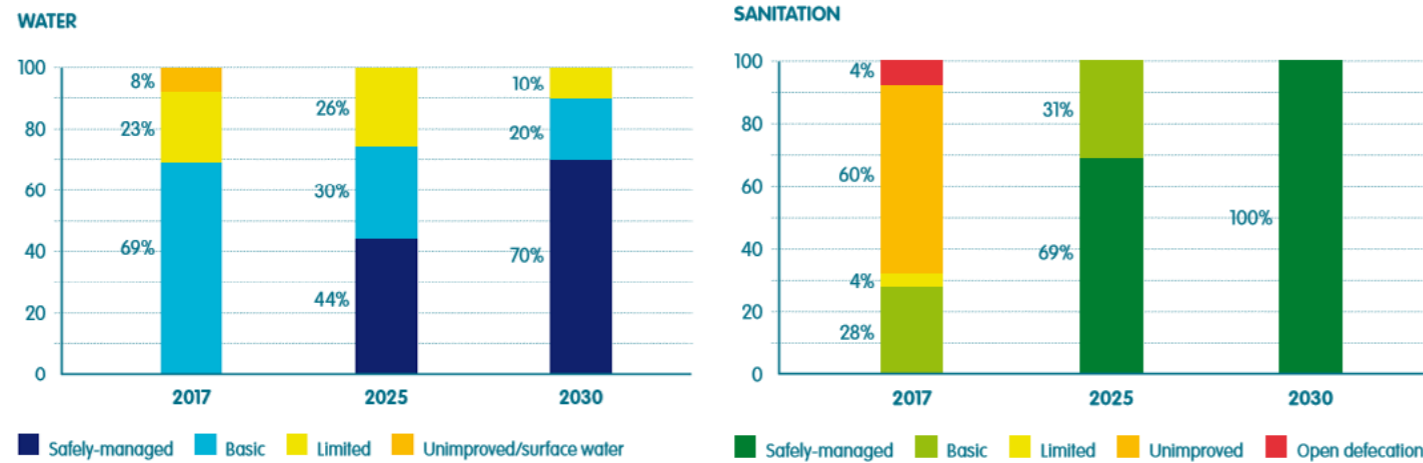


Figure 3 2017 water and sanitation service levels in Banfora district and projections for achieving SDG6 by 2030.

The WASH system and its building blocks

Reliable and sustainable WASH services can only be delivered by strong and resilient local WASH systems. Systems are the networks of people, institutions, hardware and resources necessary to deliver services. The partnership is using nine building blocks to break down the complexity of the WASH system.

For WASH services to be delivered, all these building blocks must be present and working to at least a minimum level. Partners working at the district focus on different elements of the WASH system, such as finance, planning and budgeting, monitoring and regulation, learning and adaptation, which have all been identified as priority building blocks in Banfora.

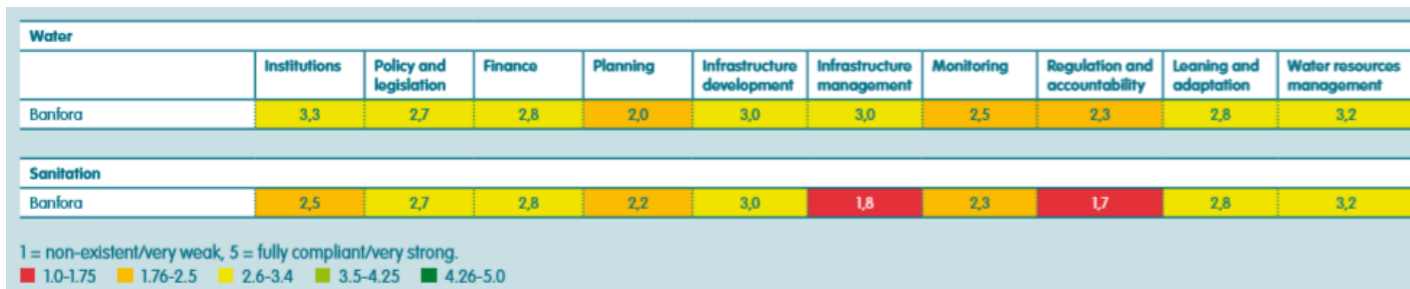


Figure 4 Baseline scores of the different building blocks in Banfora.

Who is involved and how?

Collective action in Burkina Faso

Government entities

The Mayor of Banfora, Mr. Aboubakar Héma is leading on WASH related activities in Banfora district in collaboration with the following entities:

- Direction Régionale de l'Eau et de l'Assainissement (DREA) Cascades
- La Direction Générale de l'Economie et de la Planification (DGEP)
- La Direction Générale des Etudes et des Statistiques Sectorielles (DGESS)
- Le Ministère de l'Eau et de l'Assainissement (MEA)
- Direction Générale de l'Assainissement (DGA)

Service providers

- **L'Office National de l'Eau et de l'Assainissement (ONEA)** is the national utility for water and sanitation services in Burkina Faso. In Banfora district, ONEA is the official utility in urban areas.

Partners

Organisation	Focus
IRC	Plays the role of a change hub in Banfora. This work is based on two principal pillars: 1) supporting facilitation, convening, communications, knowledge management, process documentation, monitoring and learning activities that drive advocacy and action; 2) supporting government capacity, working together with the Mayor of Banfora on achieving the goals set in the district WASH master plan.
Catholic Relief Services (CRS)	Supports the municipality with the implementation of the Saniya So project which aims to improve WASH services in 17 health centres and 28 schools.
Centers for Disease Control and Prevention (CDC)	Focuses on action research for monitoring result indicators under the Saniya So project.
Access Development	Supports the municipality with carrying out optimised drilling.
WaterAid	Provides technical support for a 2020-21 project focused on promoting menstrual hygiene management and sanitation, led by the municipality in the district. The MUNYU Association supports social intermediation for this project.
Gambidi Space	Promotes hygiene and sanitation through social art.
CIEFOEB	Supports the municipality through raising citizens' awareness of tax compliance. They call on municipalities to address challenges of the WASH, education and health sectors in their budgets.
GERDDES	Encourages local government accountability by organising an annual day of reporting back to civil society.
Labo Citoyennetés	Provides technical support for building the capacities of populations for practicing their citizen rights.
Charity Water	Supporting and implementing a project to rehabilitate drinking water supplies and pumps in 2020.
GOPA	Works on implementing the "AEPA 4R en milieu urbain" programme with ONEA. This is a programme that concentrates on improving drinking water and sanitation services in four regions, including Banfora, in urban areas.
DREA	Supports the Contracting Authority (le Pouvoir Adjudicateur) with producing national inventories and ensures the implementation of the National Budget of the Ministry of the Water and Sanitation.

Financial partners

The **Conrad N. Hilton Foundation's** 2017-2021 Safe Water Strategy (SWS) embraces the challenge of driving progress at district level in six countries: Burkina Faso, Ethiopia, Ghana, Mali, Niger and Uganda. These initiatives provide space for exploring new solutions and expand approaches that have already been shown to work as a precursor to national and global implementation. Through this strategy the Foundation's partners work towards achieving SDG 6 in schools, healthcare facilities and at the household level in Banfora.

The **KfW Development Bank** supports the implementation of the 'AEPA 4R en milieu urbain,' Water supply and sanitation 4 Regions Project in urban areas.

DANIDA supports WaterAid's Great West Project.

The **One Drop Foundation** supports the implementation of the social art project of Gambidi space.

The **Agence Française de Développement** runs the Autonomous Urban Sanitation Project / PAAMU (2018-2021).

The **Association Internationale des Maires Francophones** supports a WASH project that is being implemented by the municipality in four schools in Banfora district.

The **Ministère de l'Eau et de l'Assainissement** is implementing a Drinking Water Supply and Sanitation Program with **World Bank** funds.

The collaboration of these stakeholders at the district and country levels has supported Banfora district to forge a shared vision of success and to establish a plan that guides partners' efforts in realising their collective goals towards achieving SDG 6. Partners are now planning and executing activities to deliver the master plan and advance a local learning agenda that addresses questions around financial flows; or challenges with restructuring the technical unit of the municipal authority. There is a strong collective commitment to helping the municipality of Banfora roll out its strategic plan and in doing so learn from and document the process.

Investment Plan 2018-2030

Area of focus	Estimated budget (CFA Francs, Burkina Faso's local currency)			
	2018-2020	2021-2025	2026-2030	Total
Increase in the institutional performance of the town hall	33,575,000	32,427,500	32,027,500	98,030,000
Universal access to improved drinking water services	6,860,077,506	2,054,300,000	2,851,460,000	11,765,837,506
Universal access to appropriate wastewater treatment services	753,924,000	2,619,646,750	1,492,947,250	4,866,518,000
Professional management of WASH services	14,813,000	14,552,500	23,552,500	52,918,000
Capacity building for citizen's participation	29,250,000	32,225,000	32,225,000	93,700,000
Total	7,691,639,506	4,753,151,750	4,432,212,250	16,877,003,506

Table 1 Investment Plan 2018-2030. The first phase is devoted to the ownership and creation of an enabling environment for the implementation of the plan. The relatively high proportion of investments in drinking water supply during this period is due to the pursuit of the earlier commitment of the commune's partners.

References

AMCOW Country Status Overview, 2011. Water Supply and Sanitation in Burkina Faso Turning Finance into Services for 2015 and Beyond. World Bank, Washington, DC, USA.

Commune de Banfora, 2018. Municipal Strategic Plan for Public Water and Sanitation Services 2018-2030. Commune de Banfora, Burkina Faso.

Huston, A. and Moriarty, P.B., 2018. Understanding the WASH system and its building blocks: building strong WASH systems for the SDGs. IRC, The Hague, the Netherlands.

Ministry of Water and Sanitation, Burkina Faso, UNICEF and IRC Burkina Faso, 2018. Towards Sustainable Hygiene and Sanitation for All in Burkina Faso – conference proceedings. IRC Burkina Faso, Ouagadougou, Burkina Faso.

For more information contact:

Juste Nansi, Country Director, IRC Burkina Faso

Email: burkina@ircwash.org